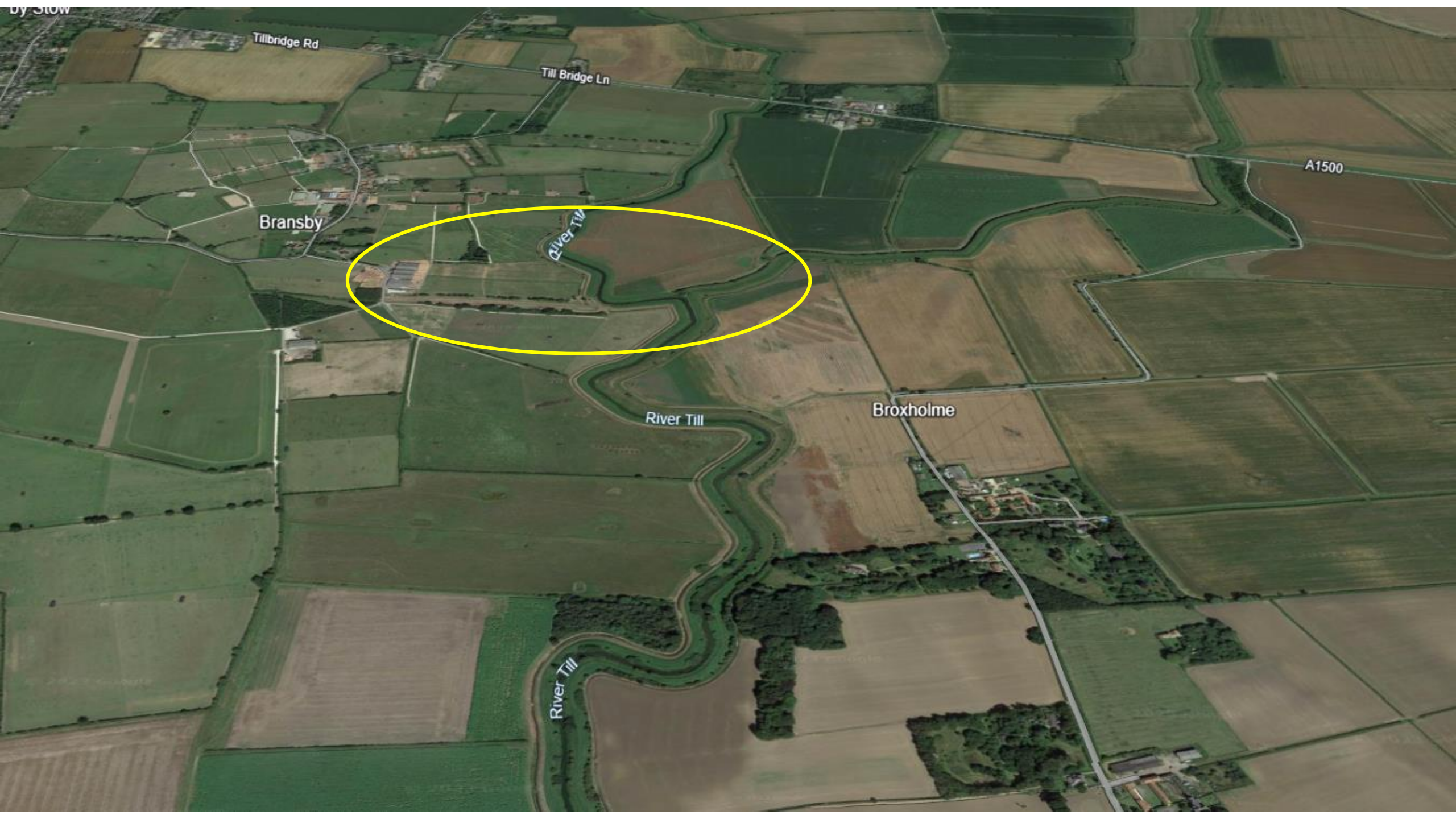


# 7000Acres Supplement to REP-110 [Flooding Concerns]

- The following images demonstrate the extent of flooding following storm Babet (18-21 October 2023).
- Given the extent to which more extreme rainfall is anticipated, the rate at which this flows over the land must be considered.
- The creation of a significant area of tilted impermeable glass surface would concentrate and accelerate run-off, and would inevitably will exacerbate flooding impacts.

Drone photographs of flooded catchment areas of river Till on Sunday, 22 October 2023  
from Odder to Springthorpe in permitted fly zone below 120 metres

Around areas of West Burton and Cottam proposed solar developments



Tillbridge Rd

Till Bridge Ln

A1500

Bransby

River Till

River Till

Broxholme

River Till







Tillbridge Rd

Till Bridge Ln

the Fallows

Bransby

River Till

Broxholme

River Till





Coates

Stow Pasture

Thorpe in the Fallows

Tillbridge Rd

Tillbridge Ln

Bransby

River Till

Broxholme









Coates

Stow Pasture

River Till





Stow Pasture

River Till

Coates

River Till

River Till





River Till

Coates

Stow Pasture

Field





River Till

River Till

Stow Pasture

Coates

River Till





